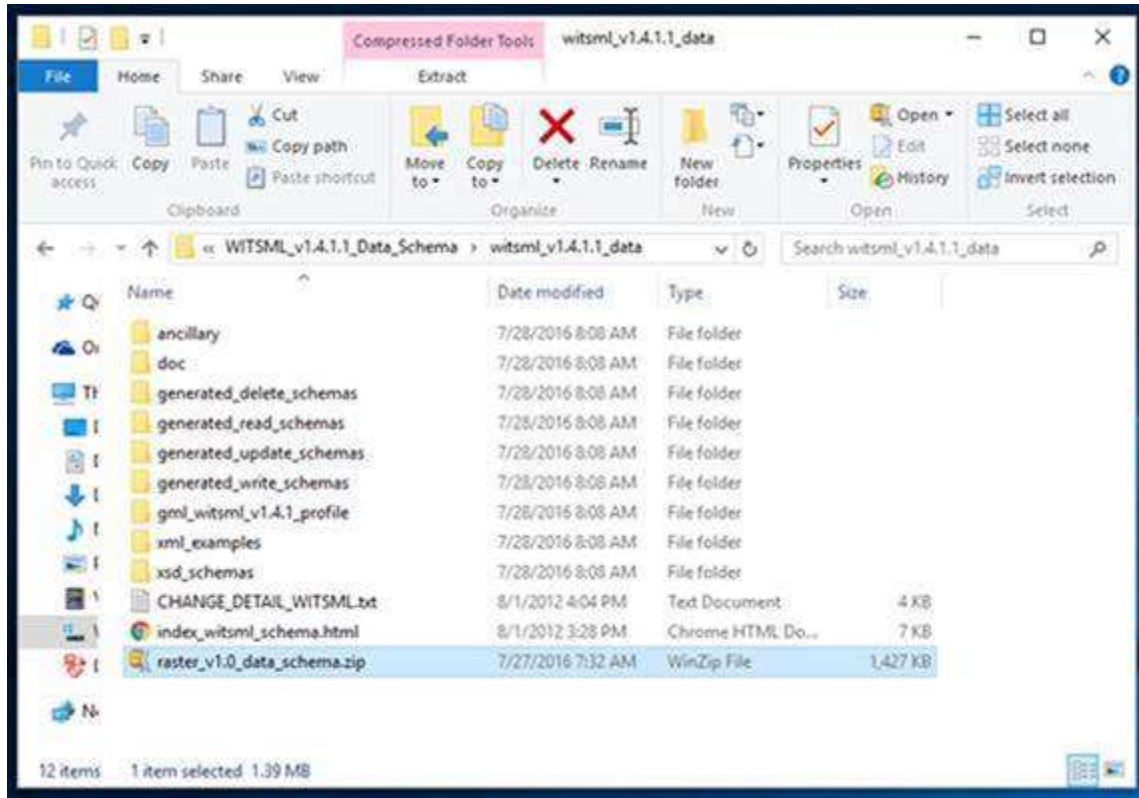
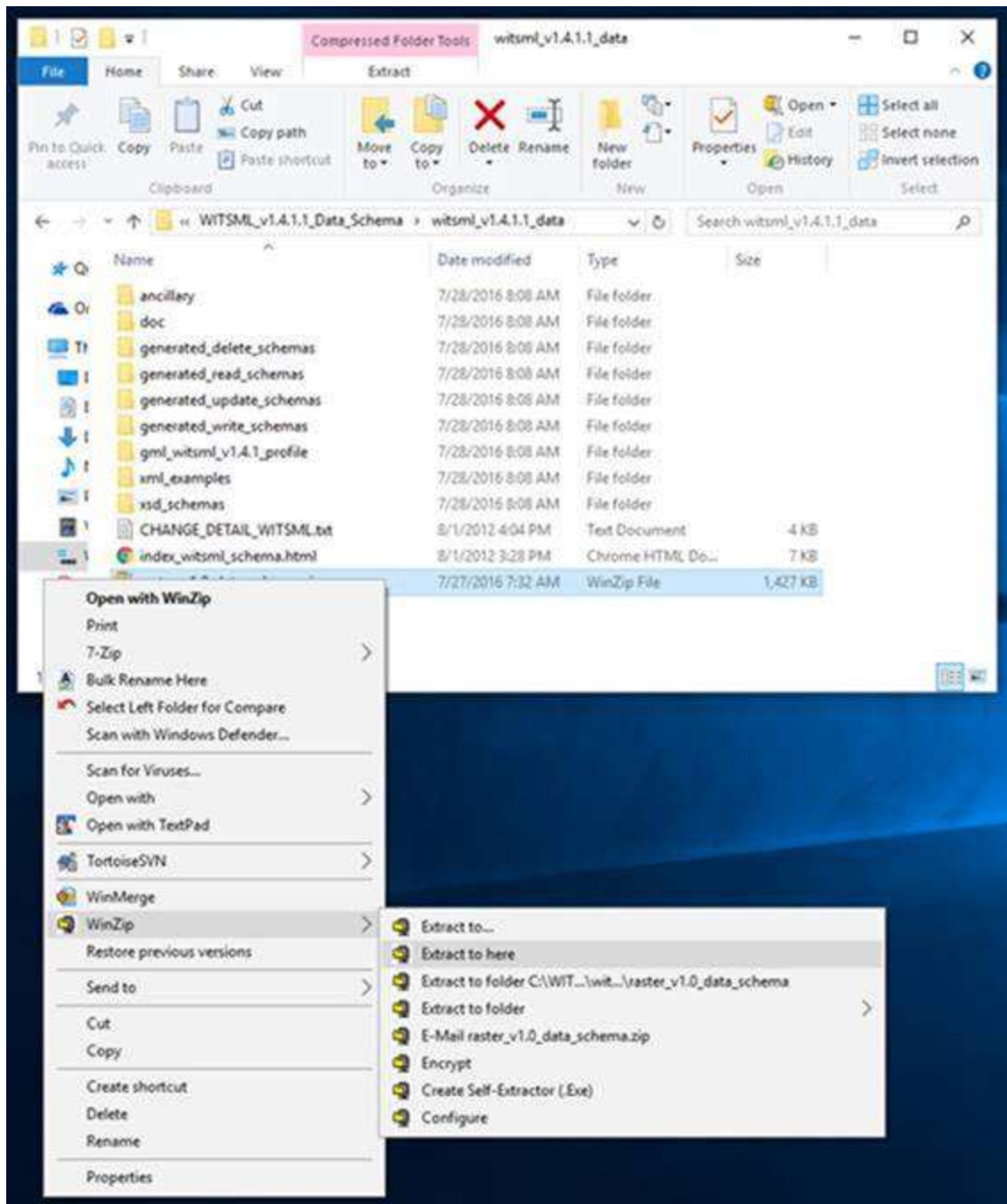


INSTRUCTIONS TO ADD depthRegImage data object to v1.4.1.1 Implementation

Copy the zip file to its proper location in the WITSML_v1.4.1.1_Data_Schema\witsml_v1.4.1.1_data folder, as displayed below.

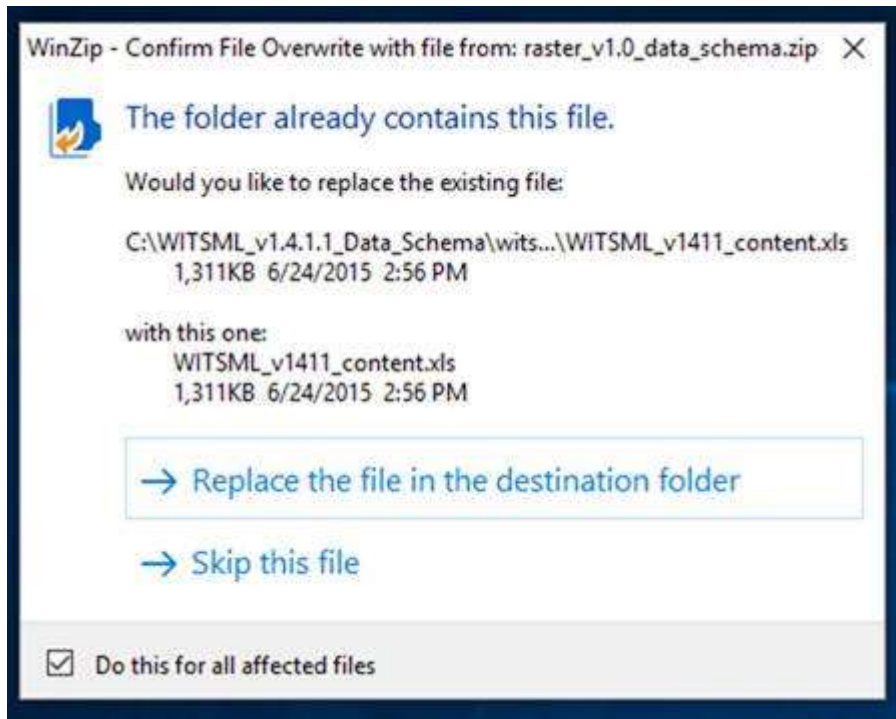


After copying, [Extract to here](#) as illustrated below.



When the Confirm File Overwrite warning box appears,

1. Click the checkbox to [Do this for all affected files](#), then
2. Select the option to [Replace the file in the destination folder](#).



This procedure overwrites the old files with the same file as in the zip, and adds the new schema files of the Raster object to the xsd_schemas folder of Witsml 1.4.1.1.